

LODGING OPTIONS AT VÄVSTUGA

Farmhouse

Single rooms with two shared co-ed bathrooms (one full, one half). Rooms & full bath up one flight of stairs, on second floor. Closet, dresser and/or storage shelves, lamps, fans, and bedside table. Free wifi and use of student kitchen/tea room.

Forest Fancy

This room is at the north end of the house. This room has plenty of privacy and a large built-in bookshelf.

One twin-size bed.

SINGLE OCCUPANCY



Birder's Delight

This room is right at the top of the main stairway. It is the closest to the front door, as well as closest to the full bathroom on the second floor.

One twin-size bed.

SINGLE OCCUPANCY

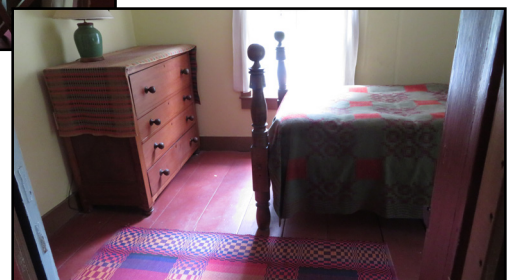


Southern Comfort

This room is at the south end of the house. It is right next to our “playroom” full of yarns and other supplies. This is a more social location and good for the night owl who might like to stay up to design and socialize. Closest to the back staircase.

One twin-size bed.

SINGLE OCCUPANCY



LODGING OPTIONS AT VÄVSTUGA

Cabins

Porta-potty is available.

Access to Farmhouse bathrooms, shower, wifi, and student kitchen/tea room.

Schoolhouse Cabin

An adorable cabin in the southern front yard of the Farmhouse, it has been used as our “schoolhouse” in recent years. It is now set up with two twin beds, electricity, a small air conditioner, and tiny refrigerator. It is a great option for rustic comfort. As weather permits, there is an outdoor solar shower.

ELECTRICITY

SINGLE OR DOUBLE OCCUPANCY

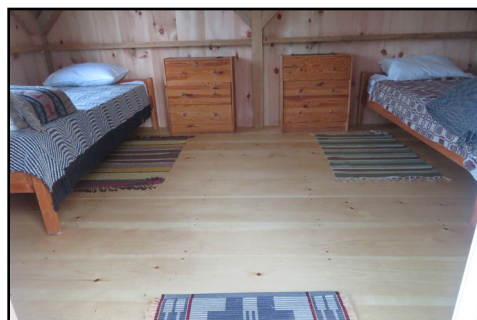


Bear Den

Right next to the Schoolhouse cabin is our NEWEST cabin, topped with a cupola and shiny copper bear weathervane. It has two bureaus, a table/desk & chair, and two twin-size beds (which can be joined to form a California king, as needed).

ELECTRICITY

SINGLE OR DOUBLE OCCUPANCY



Two more Cabins on another page

LODGING OPTIONS AT VÄVSTUGA

Cabins (one of two pages)

Elmside Cabin

This is our tiny cabin up near the garden, just behind our large Elm tree. Cute as a button, it has a desk/bureau, gate-leg round table, and one twin-size bed. NO ELECTRICITY, but it has a small wood stove (we can supply wood upon request).

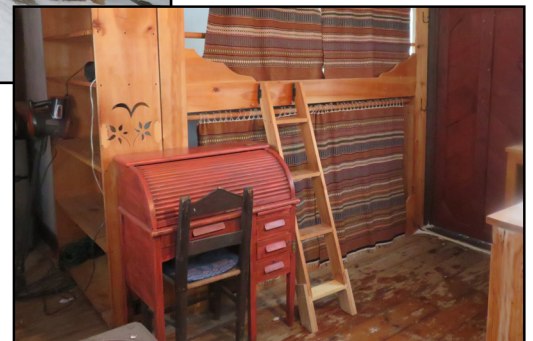
NO ELECTRICITY
SINGLE OCCUPANCY



Meadowview Cabin

This is our most luxurious cabin, complete with electricity, a mini kitchen, and water (available from a hydrant just outside the door). Two Swedish-style bunkbeds are larger than twin-size, but smaller than double. This cabin is located up the hill behind the Barn and is about a 5-7 minute walk to the Farmhouse.

ELECTRICITY
SINGLE OR DOUBLE OCCUPANCY



LODGING OPTIONS AT VÄVSTUGA

Shady Nook Glamping Tent

Seasonal use. Porta-potty is available.
Access to Farmhouse bathrooms, shower, and wifi,
and student kitchen/tea room.

Shady Nook Glamping Tent

This “Glamping” tent gets plenty of shade nestled up against an old silo foundation just up the path from our store. There is a lovely view across the yard. It is about a 1-minute walk from the Farmhouse and Barn.

Two twin beds & two bureaus

ELECTRICITY

SINGLE OR DOUBLE OCCUPANCY

