

# LODGING OPTIONS AT VÄVSTUGA

## Farmhouse

Single rooms, located on the second floor of the yellow farm house.

Each contains a closet, dresser or storage shelves, a lamp, fan, and bedside table.

Two shared co-ed bathrooms (one full, one half) / Free wifi and use of student kitchen/tea room.

### Forest Fancy

This room, at the north end of the house, has plenty of privacy and a large built-in bookshelf.

One twin-size bed.

*Single occupancy*



### Birder's Delight

This room, at the top of the main stairway, is the closest to the front door, and second floor bathroom.

One twin-size bed.

*Single occupancy*

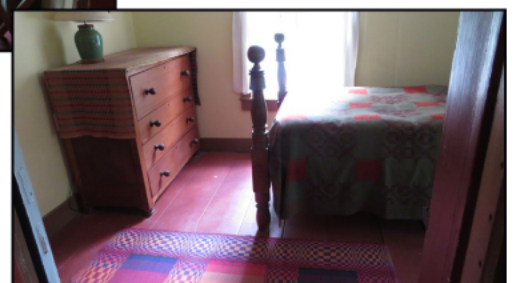


### Southern Comfort

This room, at the south end of the house, is closest to the back staircase and between our "playroom" and laundry room.

One twin-size bed.

*Single occupancy*



# LODGING OPTIONS AT VÄVSTUGA

## Rustic Cabins

Scattered around the property, these cute dwellings have access to Farmhouse bathrooms, showers, wifi, and student kitchen/tea room.

Porta-potty or outhouse located nearby.

### Schoolhouse Cabin

An adorable cabin, closest to the Farmhouse and previously used as our “schoolhouse.” This cabin has electricity, two twin-size beds, a small air conditioner, and a dorm size refrigerator. There is also a seasonal outdoor solar shower.

*Electricity*

*Single or double occupancy*



### Bear's Den

Next to the Schoolhouse, topped with a shiny copper bear weathervane and cupola, this cabin has electricity, two twin-size beds (which can be joined to form a California king, if needed), two bureaus, a table, desk and chairs.

*Electricity*

*Single or double occupancy*



***Two more Cabins on another page***

# LODGING OPTIONS AT VÄVSTUGA

## Rustic Cabins (con't)

### Elmside Cabin

This tiny cabin, just behind our large Elm tree, is next to the garden. It has one twin-size bed, a bureau, a gate-leg round table and chair, along with a small wood stove (wood provided upon request)

*No electricity*  
*Single occupancy*



### Meadowview Cabin

Located just up the hill, in the meadow, is our most rustic cabin. A 5-7 minute walk to the Farmhouse, this cabin is complete with electricity, two Swedish-style bunkbeds (larger than a twin-size, but smaller than double), a mini kitchen, and water (available from a well just outside.)

*Electricity*  
*Single or double occupancy*



# LODGING OPTIONS AT VÄVSTUGA

## Shady Nook Glamping Tent

This spacious tent has access to the Farmhouse bathrooms, showers, wifi, and student kitchen/tea room.

### Shady Nook Glamping Tent

This “Glamping” tent is nestled up against an old silo foundation, just up the path from our store. It is a 1-minute walk from the Farmhouse and a two minute walk from the Barn. With a lovely view of the property, this tent has electricity, two twin-size beds, two bureaus, and two chairs.

*Electricity*

*Single or double occupancy*

